

# Severe Heavy Duty U-Joint Removal Kit

20155

**TIGER  
TOOL**

Have What It Takes

## Safety Warning

**Read all instructions and safety warnings prior to operation. Failure to do so could result in equipment damage, personal injury or even death.**

- **Stay Alert!** Watch what you are doing and use common sense when operating this tool.
- Inspect product for damage prior to using; do not use if product is in unsafe condition.
- Do not operate tool while under the influence of drugs, alcohol or medication.
- Always use safety equipment to prevent injuries. Approved face and eye protection must always be worn by the operator, as well as others in the work area.
- Do not overreach. Keep proper footing and balance at all times.
- Dress properly. Do not wear loose clothing or jewelry. Keep your hair, clothing and gloves away from moving parts.
- Keep hands clear of all pressurized hydraulic components.
- Always ensure hoses are free from sharp bends and kinks.
- Keep your work area clean and well lit.



View demonstration videos and a complete product list at [tigertool.com](http://tigertool.com)

Technical Support  
1.800.661.4661

# Severe Heavy Duty U-Joint Removal Kit

20155

**TIGER  
TOOL**

Have What It Takes

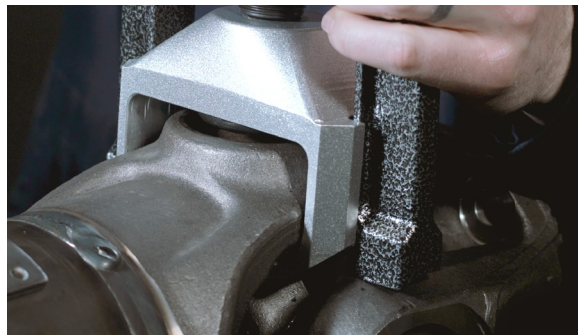
## Operating Instructions

- 1 Remove all retaining rings from bearing cup bores. **(Figure 1)**
- 2 Slip the U-Joint Puller over the yoke ear. **(Figure 2)**
- 3 Turn the forcing screw clockwise with an impact wrench. **(Figure 3)**
- 4 Apply force until the u-joint cross bottoms out on the yoke ear.
- 5 Remove U-Joint Puller from yoke and rotate the driveshaft 180 degrees. **(Figure 4)**

1



2



3



4



View demonstration videos and a complete product list at [tigertool.com](https://www.tigertool.com)

Technical Support  
1.800.661.4661

# Severe Heavy Duty U-Joint Removal Kit

20155

**TIGER  
TOOL**

Have What It Takes

## Operating Instructions, Cont.

- 6 Before use, ensure the correct side of SPL 350/RPL35 clamp assembly is facing down. For the SPL 250 LITE, you will need to swap clamp assemblies. **(Figure 5)**

To flip or swap clamp assemblies, you will require internal snap ring pliers and an Allen wrench to remove the two socket head shoulder bolts (items # 7 in the parts breakdown). **(Figure 6)**

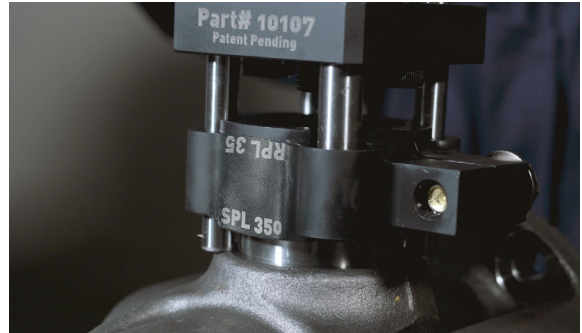
- 7 Place the bearing cup extractor over the protruding bearing cup and tighten the  $\frac{1}{2}$ " bolt to 35 ft-lbs (Make sure the dowel pins contact a flat surface on the yoke ear). **(Figure 7)**

- 8 Using an impact wrench or ratchet, turn the forcing screw clockwise until the bearing cup is fully extracted. **(Figure 8)**

- 9 Repeat steps 2-5 & 7-8 for remaining bearing cups on driveline.

Here at Tiger Tool, your satisfaction is our number one priority. Should you have any questions about this or any of our products, please call us at 1.800.661.4661.

5



6



7



8



View demonstration videos and a complete product list at [tigertool.com](http://tigertool.com)

Technical Support  
1.800.661.4661

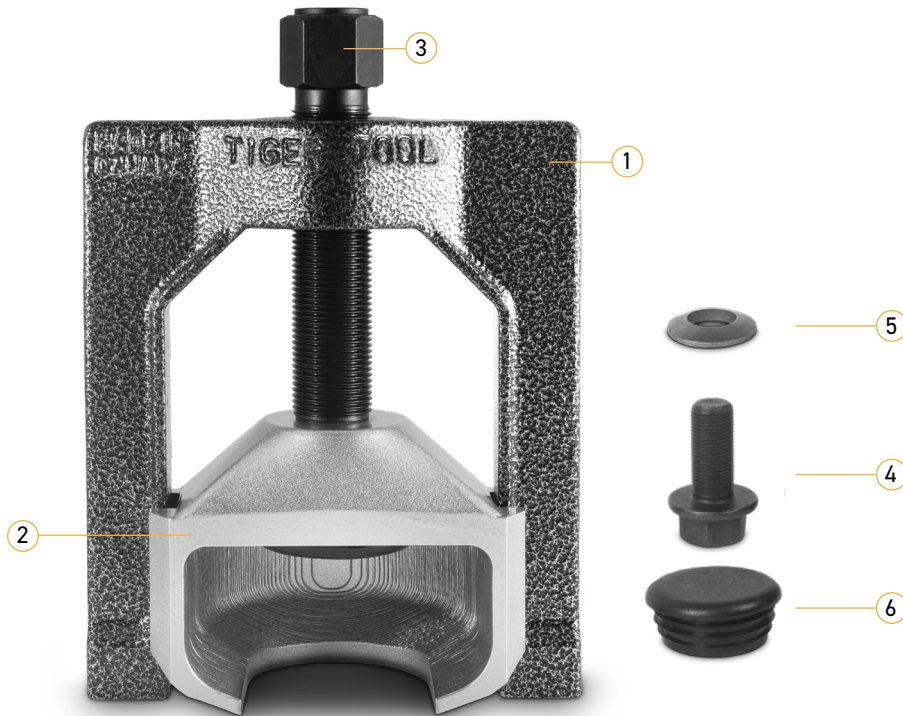
# Severe Heavy Duty U-Joint Puller

10106

**TIGER  
TOOL**

Have What It Takes

## Parts Breakdown



Item No.	Part Number	Description	Qty.
1	10106-1	Fork	1
2	10106-2	Glove	1
3	10102-3	Forcing Screw	1
4	10102-4	Retaining Bolt	1
5	10102-5	Washer	1
6	10102-6	Dome Plug	1



View demonstration videos and a complete product list at [tigertool.com](http://tigertool.com)

Technical Support  
1.800.661.4661



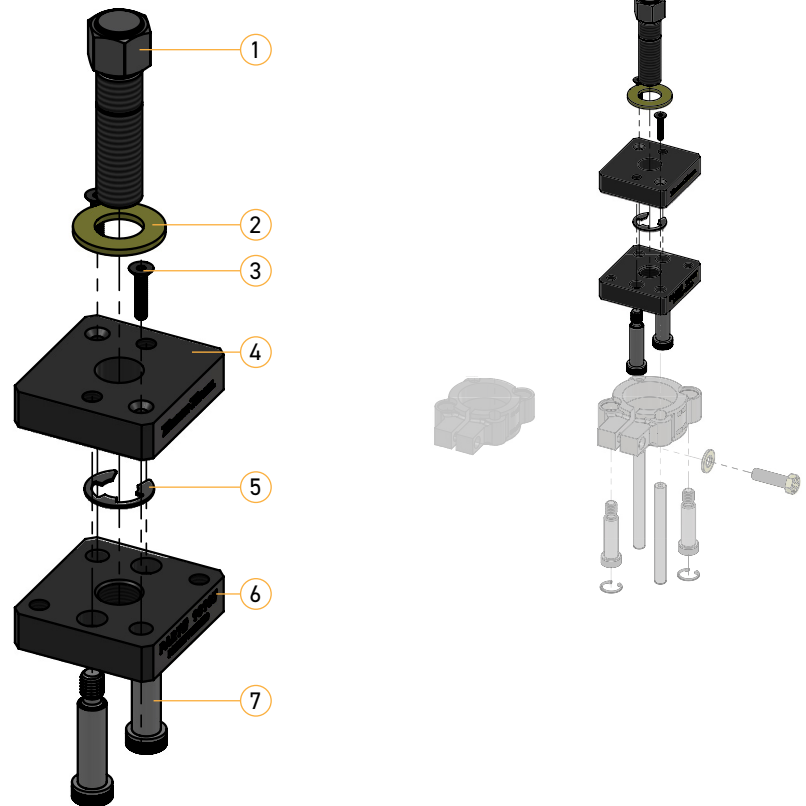
# Severe Heavy Duty Bearing Cup Extractor

10107

**TIGER  
TOOL**

Have What It Takes

## Parts Breakdown



Item No.	Part Number	Description	Qty.
1	10107-7	Forcing Screw	1
2	15001-42	Washer	1
3	10107-13	Hex Drive Flat Head	2
4	10107-3	Top Plate	1
5	10107-8	E Clip	1
6	10107-2	Mid Plate	1
7	10107-11	Socket Shoulder Bolt	4



View demonstration videos and a complete product list at [tigertool.com](http://tigertool.com)

Technical Support  
1.800.661.4661

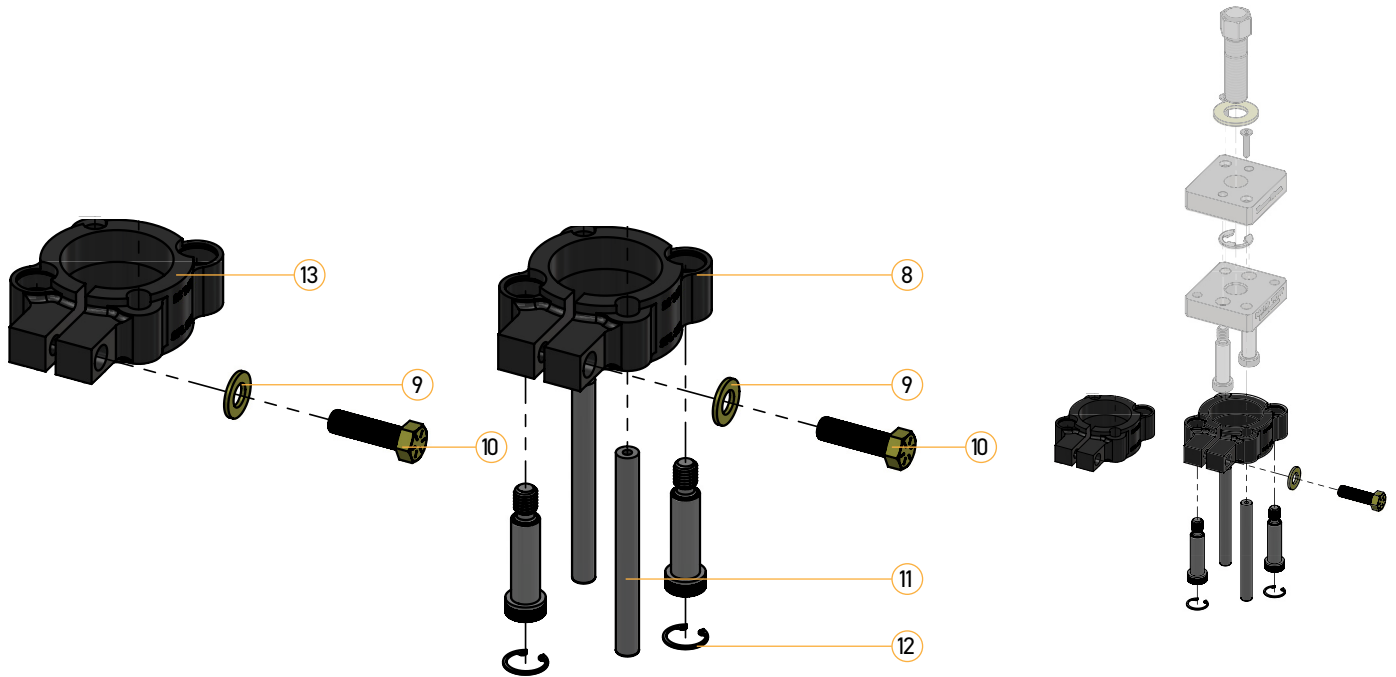
# Severe Heavy Duty Bearing Cup Extractor

10107

**TIGER  
TOOL**

Have What It Takes

## Parts Breakdown



Item No.	Part Number	Description	Qty.
8	10107-1	Clamp Ring	1
9	10407-4	Flat Washer USS	2
10	10107-9	Gr8 Hex Cap Screw	2
11	10107-6	Alloy Pull Dowel Pin	2
12	10107-12	Internal Retaining Ring	2
13	10107-16	SPL 250 Lite Clamp	1



View demonstration videos and a complete product list at [tigertool.com](http://tigertool.com)

Technical Support  
1.800.661.4661