

Strut Compressor

90102

**TIGER
TOOL**

Have What It Takes

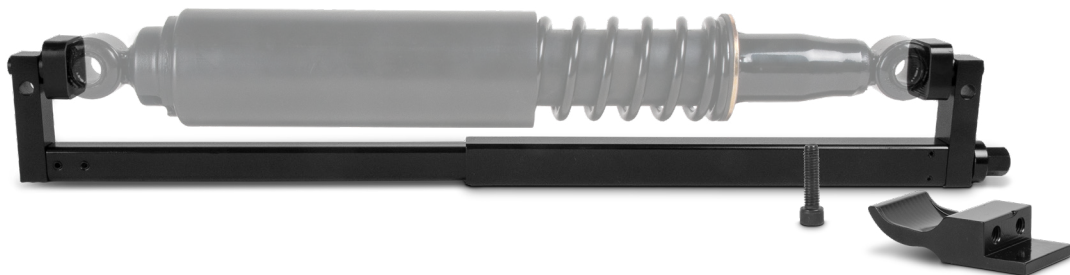
Safety Warning

Read all instructions and safety warnings prior to operation. Failure to do so could result in equipment damage, personal injury or even death.

CAUTION: USE REPLACEMENT PARTS AND ACCESSORIES PROVIDED BY TIGER TOOL ONLY. ALL REPLACEMENT PARTS AND ACCESSORIES ARE AVAILABLE. KEEP HYDRAULIC COUPLER PROTECTED WHEN NOT IN USE. DUST CAPS SHOULD BE USED ON COUPLERS WHEN NOT IN USE TO AVOID CONTAMINANTS FROM ENTERING THE HYDRAULIC CYLINDER AND POWER SOURCE. THIS PRACTICE WILL HELP TO EXTEND THE LIFE OF THIS PRODUCT AND ENSURE CONTINUED CONSISTENT OPERATION.

- **Stay Alert!** Watch what you are doing and use common sense when operating this tool.
- Inspect product for damage prior to using; do not use if product is in unsafe condition.
- Do not operate tool while under the influence of drugs, alcohol or medication.
- Always use safety equipment to prevent injuries. Approved face and eye protection must always be worn by the operator, as well as others in the work area.
- Do not overreach. Keep proper footing and balance at all times.
- Dress properly. Do not wear loose clothing or jewelry. Keep your hair, clothing and gloves away from moving parts.
- Keep your work area clean and well lit.

NOTE: HAMMERING THIS TOOL WILL VOID YOUR WARRANTY.



View demonstration videos and a complete product list at tigertool.com

Technical Support
1.800.661.4661

Strut Compressor

90102

**TIGER
TOOL**[®]

Have What It Takes

Operating Instructions

Removal

- 1 Position the strut compressor tool over the strut and tighten the tool until it stays in position (some suspensions require the 90102-10 offset arm to be installed first which require the E-Clip and Pivot to be removed first).
- 2 Loosen the bolts on both ends of the strut.
- 3 Tighten or loosen the strut compressor accordingly until the mounting bolts do not have any tension on them.
- 4 Holding the hub in place, remove the wheel end mounting bolt first then remove the inboard mounting bolt.
- 5 Take note of the length on the built-in measuring device.
- 6 Loosen the strut compressor until the strut can be removed.

Installation

- 1 Position new strut in to the tool and tighten until you have reached the above noted length.
- 2 Place the tool and strut in to position and install fastener in the inboard side first.
- 3 Install fastener in to the outboard side and remove the strut compressor.
- 4 Torque the bolts to manufacturers specifications.

Here at Tiger Tool, your satisfaction is our number one priority. Should you have any questions about this or any of our products, please call us at 1.800.661.4661.



View demonstration videos and a complete product list at [tigertool.com](https://www.tigertool.com)

Technical Support
1.800.661.4661

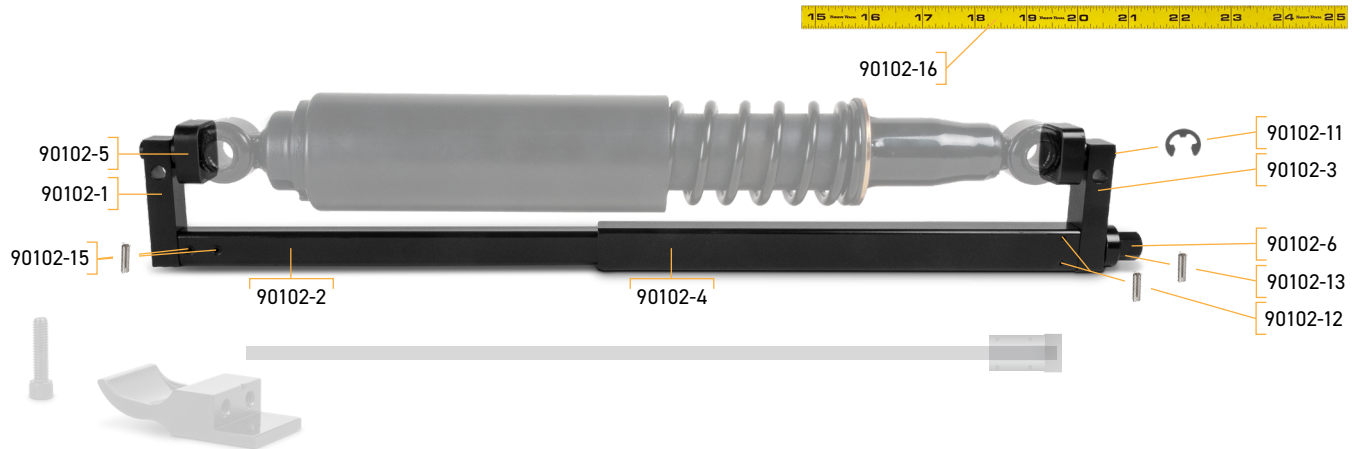
Strut Compressor

90102

**TIGER
TOOL**

Have What It Takes

Parts Breakdown



Part Number	Description	Qty.
90102-1	Solid Foot	1
90102-2	Inner Tube	1
90102-3	Through Hole Foot	1
90102-4	Outer Tube	1
90102-5	Pivot	2
90102-6	Hex Drive	1
90102-11	1/2" E Clip	3
90102-12	3/16" x 1.25" Spring Pin	2
90102-13	3/16" x .75" Spring Pin	1
90102-15	1/4" x 1" Spring Pin	2
90102-16	Measuring Tape Sticker	1



View demonstration videos and a complete product list at tigertool.com

Technical Support
1.800.661.4661

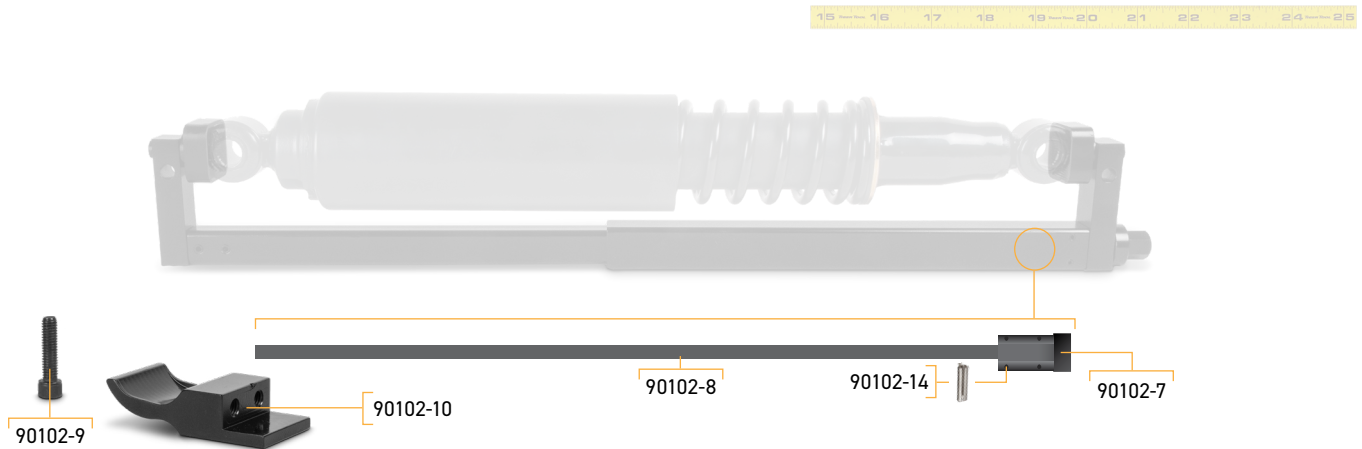
Strut Compressor

90102

**TIGER
TOOL**

Have What It Takes

Parts Breakdown



Part Number	Description	Qty.
90102-7	Threaded Block	1
90102-8	Forcing Screw	1
90102-9	3/8" - 16 X 2 SHCS	1
90102-10	Offset Arm	1
90102-14	1/8" X 7/8" Spring Pin	4



View demonstration videos and a complete product list at tigertool.com

Technical Support
1.800.661.4661